



## BUILT-INS

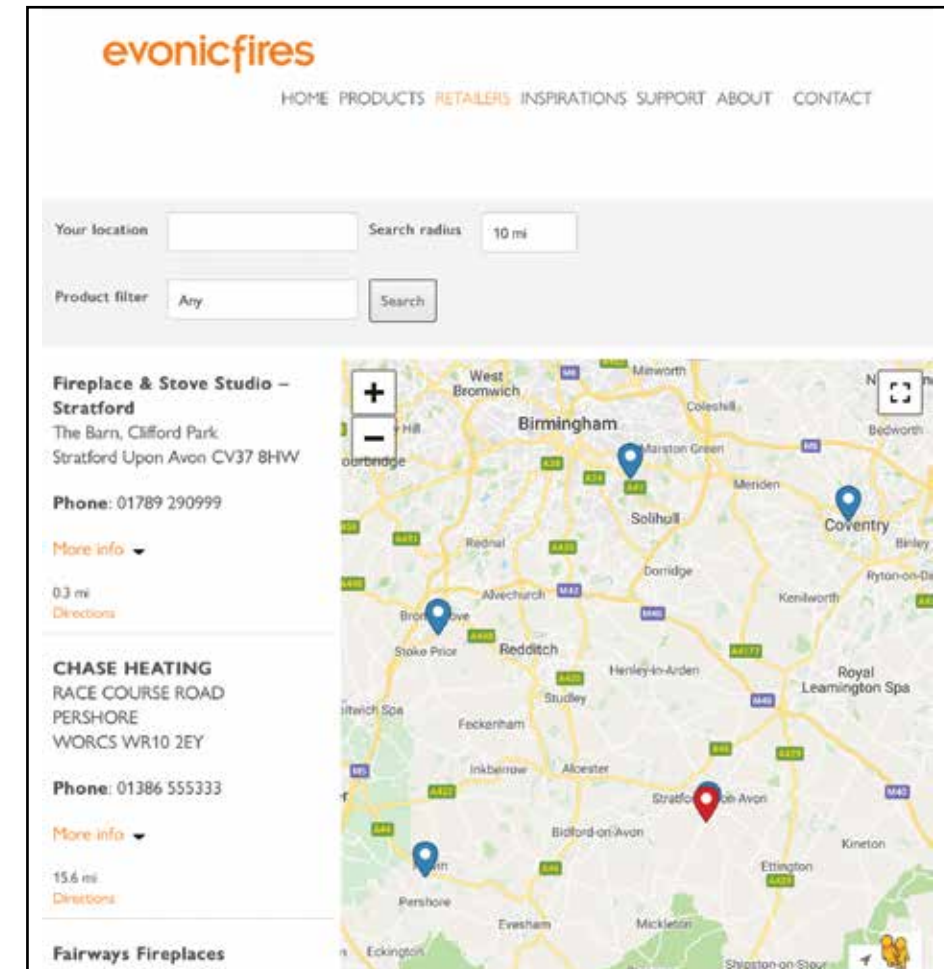
# WELCOME

Founded in 2005 and based in Stratford-upon-Avon, Evonic Fires occupy a 30,000 sq. ft manufacturing facility. Technological advancements and multi-award-winning designs make Evonic Fires one of the leading manufacturers in Europe. The built-in collection from Evonic Fires showcases our range of stylish and contemporary inset electric fires. Featuring the award-winning e-series & smart fire models, the built-in collection offers a stunning variety of sizes and styles to suit any living space. The simplicity of our built-in models enables absolute freedom to create and design individual feature fireplaces, and as all our models are electric there are no limitations to where an Evonic built-in product can be installed. With sizes ranging from 500mm up to 2400mm, as well as two-or-three sided glass models, our built-ins offer far greater scope and choice to any installation. All our built-in models come with a bespoke log set, tailored to perfectly compliment your flame effect. Incorporating our innovative evoflame® & e-smart flame effects, our built-in models are suited to any household, traditional or contemporary.



# RETAILER NETWORK

With our huge network of dedicated retailers, it has never been easier to find the Evonic fire you are looking for. Our website features a detailed search engine to locate your nearest Evonic Fires stockist, and you can even narrow the search down to find particular ranges or models using our product filter tool.





# SIMPLE OPERATION

Our built-in models offer a selection of control options, depending on which model you choose. Our smart fire models are operated using the e-smart cloud app; a user-friendly platform that allows access to your fire's features through your home Wi-Fi, meaning you can select your desired flame effect or switch on your feature lighting at the touch of a button. Our e-smart fires are also compatible with Amazon Alexa and Google Home for voice activated control. Our e-series models are controlled through the Evonic e-touch app. The e-touch connects to your appliance via Bluetooth, giving you the ability to control temperature, brightness and time settings all from your smart phone.



E-SMART CLOUD APP



E-TOUCH APP



# FEATURES

## BESPOKE FUEL BED & LOG SET



Each Evonic Fires model comes complete with a bespoke fuel bed & log set, chosen specifically by our design team to enhance the aesthetic of your fire.

## SCHOTT® GLASS

Our fireplaces utilise the latest **SCHOTT®** glass to enhance the clarity of your flame effect. **SCHOTT®** is a market leader in glass production, and their products encompass optical interference properties, allowing up to a **90%** reduction in surface reflections on all fires where **SCHOTT Conturan Magic®** is shown. **SCHOTT Clear Float®** glass is produced using the float process, resulting in glass that has a perfectly flat and parallel surface which is available on all fires where **SCHOTT Clear Float®** is displayed.

## LED TECHNOLOGY

By using the very latest LED lighting technology, Evonic Fires produce some of the most vibrant and realistic electric fires in the world.



**Please note:** Evonic Fires prides itself on constant development and innovation. We therefore reserve the right to alter the specification of any Evonic product without formal notice. The images in this brochure are produced using photography and CGI. Although the utmost care has been taken to accurately portray our products, we always advise a viewing in person at an approved Evonic Fires retailer's showroom.

# SIRUS

Evonic Fires are proud to introduce our new revolutionary flame effect – e-llusion.\* One of the first truly holographic fires on the market, the Sirus harnesses the latest LED projection technology, resulting in a stunning, silent non-mechanical flame effect.

Fully controlled via the evonic e-smart cloud app, you can control speed, brightness, and heat settings at the touch of a button on your device or Apple watch. The Sirus features tapered interior side panels, 1000W heat output and a fuel bed beautifully decorated with amber and clear glass crystals to compliment the under-bed illumination.

\*Patent pending



Shown with arctic fascia

Soapstone



Sienna



Shown without fascia



Woodland logs



Silver birch logs



- **745mm** flame effect
- **e-llusion holographic** flame effect
- 1000W heat output
- Glass fronted
- Tapered interior design
- Woodland or silver birch logs
- **e-smart cloud** app controlled
- Over-bed illumination
- Control included
- Choice of three optional MDF fascias
- Glass size - **W 745mm H 425mm**



## E-SMART CLOUD



- Brightness adjustment
- Speed adjustment
- Turn your feature lighting on or off
- Drop-down animation selection
- Target room temperature display
- Adjustable temperature gauge
- Available on Apple watch

e-smart  
technology

works with  
Google Assistant

WORKS WITH  
amazon alexa



Download on the  
App Store

GET IT ON  
Google Play

Woodland split logs



Silver birch split logs



Decorative glass chippings



## SIX UNIQUE FLAME EFFECTS

Our **e-smart** models allow complete personalisation of your fires flame effect. Choose from a selection of several pre-set flame displays or solid colour options to perfectly suit your mood or décor, and further enhance your effect by setting your desired brightness and speed.



STILL



BREATHE



SPECTRUM



EMBERS



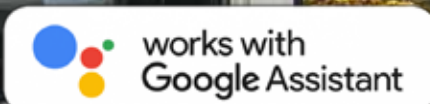
ODYSSEY



AURORA



# KARLSTAD



GF2 model shown with still effect

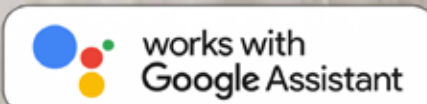


GF model shown with still effect



- **2402mm** flame effect
- 1500W heat output
- **SCHOTT CONTURAN MAGIC®** anti-reflective front glass
- Woodland or silver birch split logs
- **e-smart cloud** app controlled
- Choice of multiple flame effects
- Over-bed illumination
- Independent fuel bed settings
- Control included
- Two or three sided conversion panels included
- Glass size - **W 2402mm H 430mm**

# AVESTA



GF model shown with spectrum effect



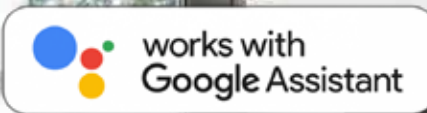
GF model shown with embers effect



- **1753mm** flame effect
- 1500W heat output
- **SCHOTT CONTURAN MAGIC®** anti-reflective front glass
- Woodland or silver birch split logs
- **e-smart cloud** app controlled
- Choice of multiple flame effects
- Over-bed illumination
- Independent fuel bed settings
- Control included
- Two or three sided conversion panels included
- Glass size - **W 1753mm H 410mm**



LINNEA



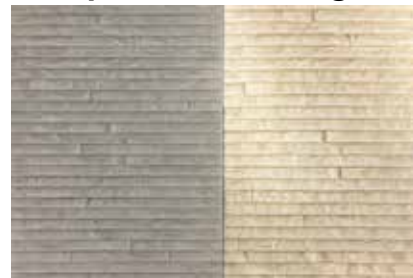
GF3 model shown with still effect



GF3 model shown with still effect and optional beige tile wing



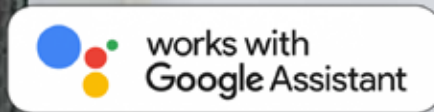
Optional tile wings



- 1506mm flame effect
- 1500W heat output
- **SCHOTT CONTURAN MAGIC®**  
anti-reflective front glass
- Woodland or silver birch split logs
- **e-smart cloud** app controlled
- Choice of multiple flame effects
- Over-bed illumination
- Independent fuel bed settings
- Control included
- Two or three sided conversion panels included
- Glass size - **W 1506mm H 353mm**



# MOTALA



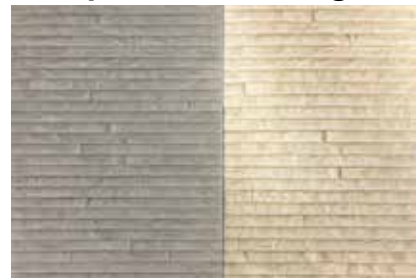
GF3 model shown with *still* effect



GF3 model shown with *spectrum* effect



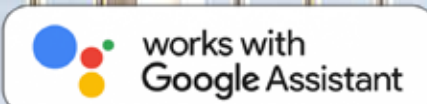
## Optional tile wings



- **1250mm** flame effect
- 1500W heat output
- **SCHOTT CONTURAN MAGIC®**  
anti-reflective front glass
- Woodland or silver birch split logs
- **e-smart cloud** app controlled
- Choice of multiple flame effects
- Over-bed illumination
- Independent fuel bed settings
- Control included
- Two or three sided conversion panels included
- Glass size - **W 1250mm H 328mm**



# KIRUNA



GF3 model shown with embers effect and optional beige tile wing



GF model shown with embers effect



Optional tile wings



- 1003mm flame effect
- 1500W heat output
- **SCHOTT CONTURAN MAGIC®** anti-reflective front glass
- Woodland or silver birch split logs
- **e-smart cloud** app controlled
- Choice of multiple flame effects
- Over-bed illumination
- Independent fuel bed settings
- Control included
- Two or three sided conversion panels included
- Glass size - **W 1003mm H 357mm**



# STORA DS



- **803mm** flame effect
- Two sided tunnel fire
- 1500W heat output - Dual heaters
- **SCHOTT CONTURAN MAGIC®**  
anti-reflective front glass
- Woodland or silver birch logs

- **e-smart cloud** app controlled
- Choice of multiple flame effects
- Over-bed illumination
- Independent fuel bed settings
- Control included
- Glass size - **W 803mm H 1003mm**

## LINDSTROM DS



- **1004mm** flame effect
- Two sided tunnel fire
- 1500W heat output - Dual heaters
- Woodland or silver birch logs
- **SCHOTT CONTURAN MAGIC®**  
anti-reflective front glass
- **e-smart cloud** app controlled
- Choice of multiple flame effects
- Over-bed illumination
- Independent fuel bed settings
- Control included
- Glass size - **W 1004mm H 354mm**

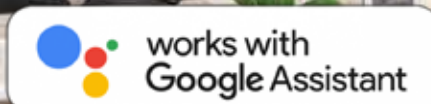
## E1030 DS



- **1004mm** flame effect
- Two sided tunnel fire
- 750/1500W heat output - Dual heaters
- Woodland or silver birch logs
- **SCHOTT CONTURAN MAGIC®**  
anti-reflective front glass
- **e-touch** app controlled
- Glass size - **W 1004mm H 354mm**



# TYRELL



GF3 model shown with still effect and optional beige tile wing



GF model shown



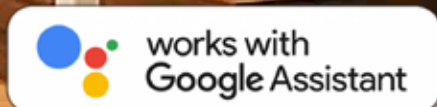
Optional tile wings



- 805mm flame effect
- 1500W heat output
- **SCHOTT CONTURAN MAGIC®** anti-reflective front glass
- Woodland or silver birch split logs
- **e-smart cloud** app controlled
- Choice of multiple flame effects
- Over-bed illumination
- Independent fuel bed settings
- Control included
- Two or three sided conversion panels included
- Glass size - **W 805mm H 590mm**



# NEWTON 10

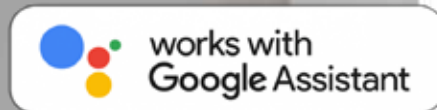


3 sided model shown with *still* effect

- **1002mm** flame effect
- 1500W heat output
- Fully open fronted
- Woodland or silver birch logs
- **e-smart cloud** app controlled
- Choice of multiple flame effects
- Over-bed illumination
- Vermiculite fuel bed
- Control included
- Two or three sided conversion panels available
- Opening size - **W 1002mm H 277mm**



## NEWTON 9



2 sided model shown with *breathe* effect

- 836mm flame effect
- 1500W heat output
- Fully open fronted
- Woodland or silver birch logs
- e-smart cloud app controlled
- Choice of multiple flame effects
- Over-bed illumination
- Vermiculite fuel bed
- Control included
- Two or three sided conversion panels available
- Opening size - **W** 836mm **H** 491mm



## NEWTON 7

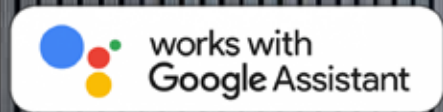


Open fronted model shown with odyssey effect

- **641mm** flame effect
- 1500W heat output
- Fully open fronted
- Woodland or silver birch logs
- **e-smart cloud** app controlled
- Choice of multiple flame effects
- Over-bed illumination
- Vermiculite fuel bed
- Control included
- Two or three sided conversion panels available
- Opening size - **W 641mm H 285mm**



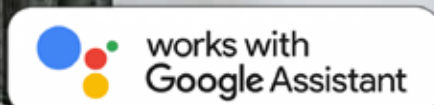
## NEWTON 6



Open fronted model shown with *embers* effect

- **637mm** flame effect
- 1500W heat output
- Fully open fronted
- Woodland or silver birch logs
- **e-smart cloud** app controlled
- Choice of multiple flame effects
- Over-bed illumination
- Control included
- Vermiculite fuel bed
- Two or three sided conversion panels available
- Opening size - **W 637mm H 455mm**

VALTER



GF model shown with still effect



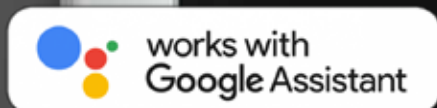
GF2 model shown with embers effect



- 1003mm flame effect
- 1500W heat output
- SCHOTT CLEAR FLOAT® front glass
- Woodland or silver birch logs
- e-smart cloud app controlled
- Choice of multiple flame effects
- Over-bed illumination
- Independent fuel bed settings
- Control included
- Two or three sided conversion panels included
- Glass size - **W** 1003mm **H** 357mm



# KALLAN



GF2 model shown with still effect

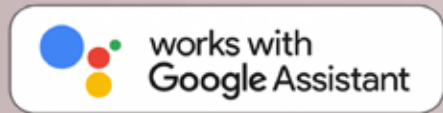


GF2 model shown with embers effect



- **642mm** flame effect
- 1500W heat output
- **SCHOTT CLEAR FLOAT®** front glass
- Woodland or silver birch logs
- **e-smart cloud** app controlled
- Choice of multiple flame effects
- Over-bed illumination
- Independent fuel bed settings
- Control included
- Two or three sided conversion panels included
- Glass size - **W 642mm H 282mm**

# THOREN



GF model shown with embers effect

- 639mm flame effect
- 1500W heat output
- SCHOTT CLEAR FLOAT® front glass
- Woodland or silver birch logs
- e-smart cloud app controlled
- Choice of multiple flame effects
- Over-bed illumination
- Independent fuel bed settings
- Control included
- Two or three sided conversion panels included
- Glass size - **W** 639mm **H** 457mm



EVOFLAME®



- Low or high heat selection
- Personalised timing options
- Adjustable flame effect bar
- Adjustable temperature gauge
- Target room temperature display

evoflame®  
ULTRAHD

evoflame®  
technology



Woodland logs



Silver birch logs



Decorative slate chippings



AWARD-WINNING FLAME EFFECT





E2400



GF3 model shown



GF2 model shown

evoflame<sup>®</sup>  
ULTRAHD



- **2402mm** flame effect
- 750/1500W heat output
- **SCHOTT CONTURAN MAGIC<sup>®</sup>**  
anti-reflective front glass
- Woodland or silver birch logs
- **e-touch** app controlled
- **evoflame ultra HD<sup>®</sup>** effect
- Two or three sided conversion panels included
- Glass size - **W 2402mm H 430mm**



E1800



GF3 model shown



GF model shown

evoflame<sup>®</sup>  
ULTRAHD



- 1753mm flame effect
- 750/1500W heat output
- SCHOTT CONTURAN MAGIC<sup>®</sup> anti-reflective front glass
- Woodland or silver birch logs
- e-touch app controlled
- evoflame ultra HD<sup>®</sup> effect
- Two or three sided conversion panels included
- Glass size - **W** 1753mm **H** 410mm



E1560



GF3 model shown



GF model shown

evoflame<sup>®</sup>  
ULTRAHD



- 1508mm flame effect
- 750/1500W heat output
- SCHOTT CONTURAN MAGIC<sup>®</sup> anti-reflective front glass
- Woodland or silver birch logs
- e-touch app controlled
- evoflame ultra HD<sup>®</sup> effect
- Two or three sided conversion panels included
- Glass size - **W** 1508mm **H** 605mm



E1500



GF model shown



GF3 model shown

evoflame<sup>®</sup>  
ULTRAHD



- 1506mm flame effect
- 750/1500W heat output
- SCHOTT CONTURAN MAGIC<sup>®</sup> anti-reflective front glass
- Woodland or silver birch logs
- e-touch app controlled
- evoflame ultra HD<sup>®</sup> effect
- Two or three sided conversion panels included
- Glass size - **W** 1506mm **H** 353mm

E1250



GF3 model shown



GF model shown

evoflame<sup>®</sup>  
ULTRAHD



- 1250mm flame effect
- 750/1500W heat output
- SCHOTT CONTURAN MAGIC<sup>®</sup> anti-reflective front glass
- Woodland or silver birch logs
- e-touch app controlled
- evoflame ultra HD<sup>®</sup> effect
- Two or three sided conversion panels included
- Glass size - **W 1250mm H 328mm**



E1030



GF3 model shown



GF model shown

evoflame<sup>®</sup>  
ULTRAHD



- 1003mm flame effect
- 750/1500W heat output
- SCHOTT CONTURAN MAGIC<sup>®</sup> anti-reflective front glass
- Woodland or silver birch logs
- e-touch app controlled
- evoflame ultra HD<sup>®</sup> effect
- Two or three sided conversion panels included
- Glass size - **W** 1003mm **H** 357mm



E810DS



- **803mm** flame effect
- 750/1500W heat output
- Dual sided heater
- **SCHOTT CONTURAN MAGIC®**  
anti-reflective front glass

- Two sided tunnel fire
- Woodland or silver birch logs
- **e-touch** app controlled
- Glass size - **W 803mm H 1003mm**



E810



GF3 model shown



GF model shown

evoflame<sup>®</sup>  
ULTRAHD



- 808mm flame effect
- 750/1500W heat output
- SCHOTT CONTURAN MAGIC<sup>®</sup> anti-reflective front glass
- Woodland or silver birch logs
- e-touch app controlled
- evoflame ultra HD<sup>®</sup> effect
- Two or three sided conversion panels included
- Glass size - **W** 808mm **H** 1003mm

E800



GF3 model shown



GF model shown

evoflame<sup>®</sup>  
ULTRAHD



- 805mm flame effect
- 750/1500W heat output
- SCHOTT CONTURAN MAGIC<sup>®</sup> anti-reflective front glass
- Woodland or silver birch logs
- e-touch app controlled
- evoflame ultra HD<sup>®</sup> effect
- Two or three sided conversion panels included
- Glass size - **W** 805mm **H** 590mm



E730



GF2 model shown



GF model shown

evoflame<sup>®</sup>  
ULTRAHD



- **642mm** flame effect
- 750/1500W heat output
- **SCHOTT CONTURAN MAGIC<sup>®</sup>**  
anti-reflective front glass
- Woodland or silver birch logs
- **e-touch** app controlled
- **evoflame ultra HD<sup>®</sup>** effect
- Two or three sided conversion panels included
- Glass size - **W 642mm H 282mm**

E630



GF2 model shown



GF model shown

evoflame<sup>®</sup>  
ULTRAHD



- 639mm flame effect
- 750/1500W heat output
- **SCHOTT CONTURAN MAGIC<sup>®</sup>**  
anti-reflective front glass
- Woodland or silver birch logs
- **e-touch** app controlled
- **evoflame ultra HD<sup>®</sup>** effect
- Two or three sided conversion panels included
- Glass size - **W 639mm H 457mm**



E500



GF model shown



GF3 model shown

evoflame<sup>®</sup>  
ULTRAHD



- 492mm flame effect
- 750/1500W heat output
- SCHOTT CONTURAN MAGIC<sup>®</sup> anti-reflective front glass
- Woodland or silver birch logs
- e-touch app controlled
- evoflame ultra HD<sup>®</sup> effect
- Two or three sided conversion panels included
- Glass size - **W** 492mm **H** 399mm

E1000



Open fronted model shown



GF model shown

**evoflame**<sup>®</sup>  
technology



- **1002mm** flame effect
- 750/1500W heat output
- Available with fully open fuel bed or **SCHOTT CLEAR FLOAT®** front glass
- Woodland or silver birch logs
- **e-touch** app controlled
- **evoflame®** effect
- Glass size - **W 1002mm H 277mm**



E900



GF model shown



Open fronted model shown

evoflame<sup>®</sup>  
technology



- 836mm flame effect
- 750/1500W heat output
- Available with fully open fuel bed or **SCHOTT CLEAR FLOAT®** front glass
- Woodland log set
- **e-touch** app controlled
- **evoflame®** effect
- Glass size - **W 836mm H 491mm**

E710



evoflame<sup>®</sup>  
technology



- **710mm** flame effect
- 750/1500W heat output
- Fully open fronted fuel bed
- Woodland or silver birch logs
- **e-touch** app controlled
- **evoflame<sup>®</sup>** effect
- Glass size - **W 710mm H 607mm**



E700



Open fronted model shown



GF model shown

evoflame<sup>®</sup>  
technology



- 641mm flame effect
- 750/1500W heat output
- Available with fully open fuel bed or **SCHOTT CLEAR FLOAT®** front glass
- GF - Mini continental log set
- Open fronted - Woodland or silver birch log set
- **e-touch** app controlled
- **evoflame®** effect
- Glass size - **W 641mm H 285mm**

E640



Open fronted model shown



GF model shown

**evoflame**<sup>®</sup>  
technology



- **460mm** flame effect
- 750/1500W heat output
- Available with fully open fuel bed or **SCHOTT CLEAR FLOAT®** front glass
- Woodland log set
- **e-touch** app controlled
- **evoflame®** effect
- Glass size - **W 460mm H 655mm**



E600



Open fronted model shown



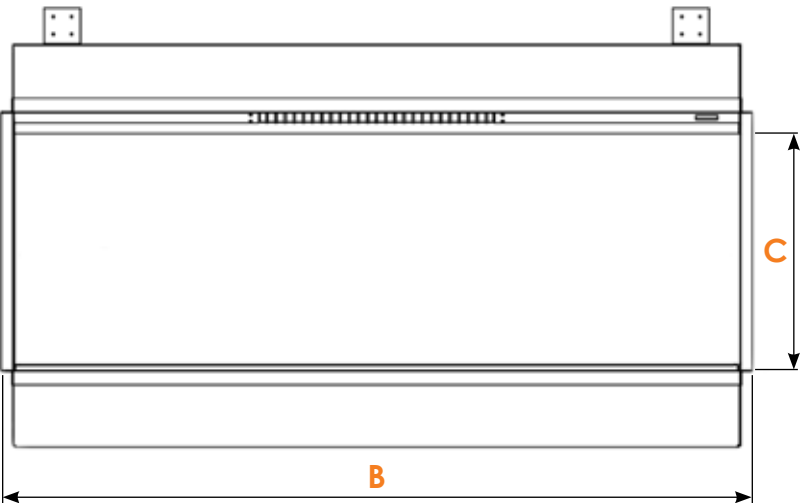
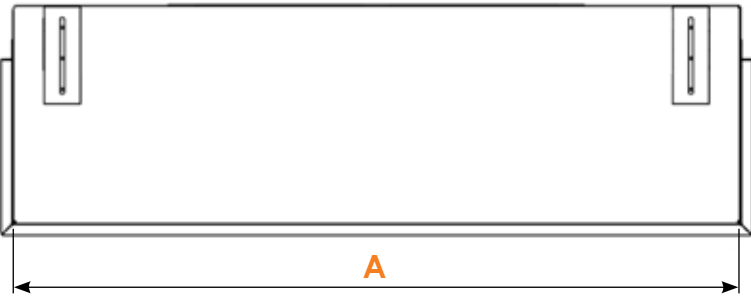
GF model shown

evoflame<sup>®</sup>  
technology

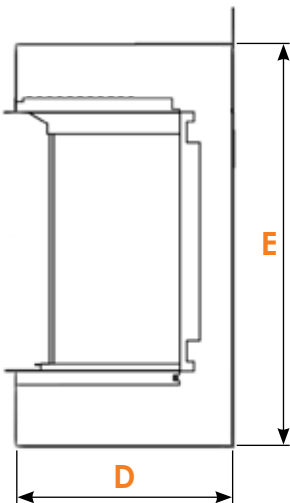


- 637mm flame effect
- 750/1500W heat output
- Available with fully open fuel bed or **SCHOTT CLEAR FLOAT®** front glass
- GF - Mini continental log set
- Open fronted - Woodland or silver birch log set
- **e-touch** app controlled
- **evoflame®** effect
- Glass size - **W 637mm H 455mm**

# SPECIFICATION



- A** - Width excl. plaster kit
- B** - Width incl. plaster kit
- C** - Opening height
- D** - Depth excl. plaster kit
- E** - Height
- F** - Width incl. tile wings  
(Not shown)
- G** - Height incl. tile wings  
(Not shown)



For detailed  
specification  
drawings  
please scan  
the QR code



| MODEL        | A      | B      | C      | D     | E      | F      | G     |
|--------------|--------|--------|--------|-------|--------|--------|-------|
| Sirus        | 745mm  | 793mm  | 326mm  | 302mm | 548mm  | N/A    | N/A   |
| Karlstad     | 2402mm | 2438mm | 430mm  | 300mm | 631mm  | N/A    | N/A   |
| Avesta       | 1754mm | 1785mm | 410mm  | 300mm | 611mm  | N/A    | N/A   |
| Linnea       | 1506mm | 1536mm | 353mm  | 300mm | 555mm  | 1914mm | 555mm |
| Motala       | 1254mm | 1284mm | 328mm  | 301mm | 556mm  | 1668mm | 556mm |
| Kiruna       | 1004mm | 1035mm | 357mm  | 300mm | 555mm  | 1418mm | 570mm |
| Stora DS     | 803mm  | 863mm  | 1003mm | 501mm | 1208mm | N/A    | N/A   |
| Lindstrom DS | 1010mm | 1056mm | 354mm  | 500mm | 558mm  | N/A    | N/A   |
| E1030 DS     | 1010mm | 1056mm | 354mm  | 500mm | 558mm  | N/A    | N/A   |
| Tyrell       | 805mm  | 853mm  | 590mm  | 302mm | 791mm  | 1188mm | N/A   |
| Newton 10    | 1002mm | 1050mm | 277mm  | 180mm | 475mm  | N/A    | N/A   |
| Newton 9     | 836mm  | 884mm  | 491mm  | 180mm | 695mm  | N/A    | N/A   |
| Newton 7     | 641mm  | 680mm  | 285mm  | 180mm | 480mm  | N/A    | N/A   |
| Newton 6     | 637mm  | 686mm  | 455mm  | 180mm | 638mm  | N/A    | N/A   |
| Valter       | 1004mm | 1035mm | 357mm  | 300mm | 555mm  | N/A    | N/A   |
| Kallan       | 642mm  | 670mm  | 282mm  | 301mm | 477mm  | N/A    | N/A   |
| Thoren       | 639mm  | 671mm  | 457mm  | 301mm | 640mm  | N/A    | N/A   |
| E2400        | 2402mm | 2438mm | 430mm  | 300mm | 631mm  | N/A    | N/A   |
| E1800        | 1753mm | 1785mm | 410mm  | 300mm | 611mm  | N/A    | N/A   |
| E1560        | 1508mm | 1538mm | 605mm  | 301mm | 808mm  | N/A    | N/A   |
| E1500        | 1506mm | 1536mm | 353mm  | 300mm | 555mm  | N/A    | N/A   |
| E1250        | 1254mm | 1284mm | 328mm  | 301mm | 556mm  | N/A    | N/A   |
| E1030        | 1004mm | 1035mm | 357mm  | 300mm | 555mm  | N/A    | N/A   |
| E810DS       | 803mm  | 863mm  | 1003mm | 501mm | 1208mm | N/A    | N/A   |
| E810         | 808mm  | 838mm  | 1003mm | 301mm | 1208mm | N/A    | N/A   |
| E800         | 805mm  | 853mm  | 590mm  | 302mm | 791mm  | N/A    | N/A   |
| E730         | 642mm  | 670mm  | 282mm  | 301mm | 477mm  | N/A    | N/A   |
| E630         | 639mm  | 671mm  | 457mm  | 301mm | 640mm  | N/A    | N/A   |
| E500         | 492mm  | 540mm  | 399mm  | 300mm | 609mm  | N/A    | N/A   |
| E1000        | 1002mm | 1050mm | 277mm  | 180mm | 475mm  | N/A    | N/A   |
| E900         | 836mm  | 884mm  | 491mm  | 180mm | 695mm  | N/A    | N/A   |
| E710         | 710mm  | 760mm  | 607mm  | 180mm | 790mm  | N/A    | N/A   |
| E700         | 641mm  | 680mm  | 285mm  | 180mm | 480mm  | N/A    | N/A   |
| E640         | 460mm  | 508mm  | 655mm  | 180mm | 843mm  | N/A    | N/A   |
| E600         | 637mm  | 686mm  | 455mm  | 180mm | 638mm  | N/A    | N/A   |



---

# evonicfires

1 Evonic House, Clifford Park, Clifford Lane  
Stratford-upon-Avon, Warwickshire, CV37 8HW

TEL: **01789 263868** | FAX: **01789 293080**

[www.evonicfires.co.uk](http://www.evonicfires.co.uk) | [sales@evonicfires.co.uk](mailto:sales@evonicfires.co.uk)

