

evonicfires
quality electric fires built in britain



SUITES 2022



“We strive to design and deliver sustainable products that are aspirational and driven by technology through innovation”

The suites collection from Evonic Fires showcases the very best in floor-based and wall-mounted electric fireplaces. Featuring the award-winning evoflame® and e-smart fire models, our suite range offers a stylish heating solution for any living space with minimal installation required.

EVONIC FIRES GOING GREEN

At Evonic Fires we firmly believe in manufacturing quality electric fires in the most ethical way possible. Once installed into your home, you can rest assured in the knowledge that your Evonic fire is being powered by one of the most sustainable and cost-effective energy sources available; electric, and the packaging for our fires is constructed using cardboard that is 100% recyclable, resulting in a robust and eco-friendly carton to ensure maximum protection.

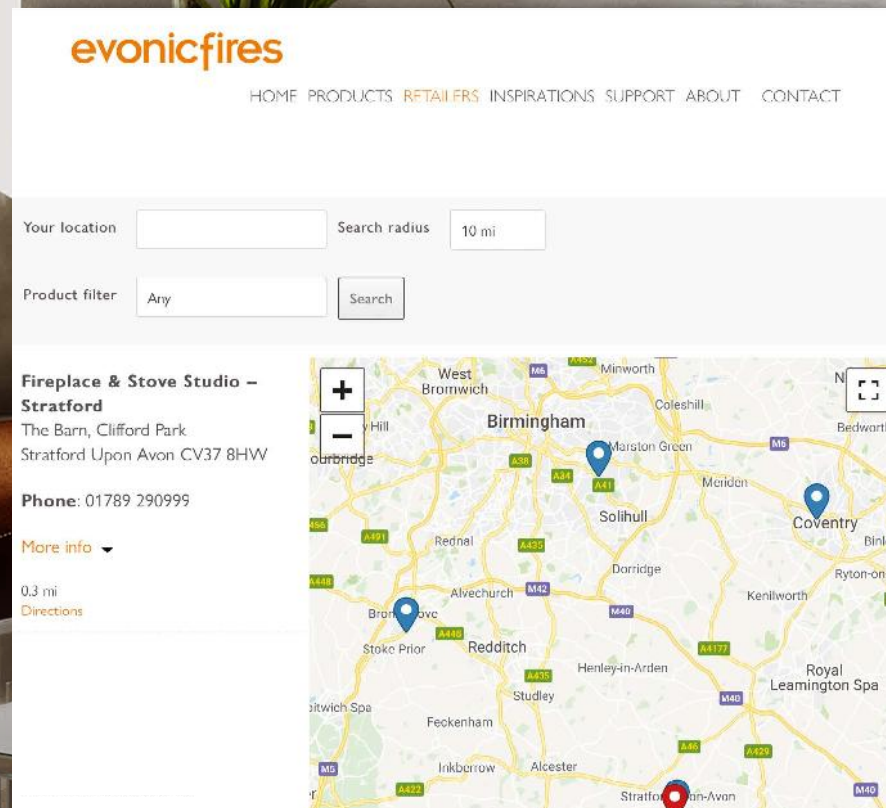


EXCELLENCE MADE IN BRITAIN

At Evonic Fires, we pride ourselves on building award-winning electric fires to the highest possible standards. Using components sourced from leading UK suppliers and assembled entirely at our factory premises in Stratford-Upon-Avon, Evonic Fires strive to achieve excellence with every fire we despatch. If you have any queries once your order arrives, our dedicated sales and service teams are available for any aftercare assistance you may require.



NATIONWIDE RETAILER NETWORK

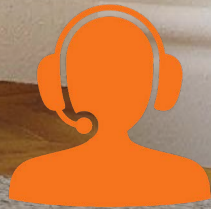


With our extensive network of dedicated retailers, it has never been easier to find the Evonic fire you are looking for. Our website features a detailed search engine to locate your nearest Evonic Fires stockist, and you can even narrow the search down to find particular ranges or models using our product filter tool.

www.evonicfires.co.uk/maptest/

evonicfires

EXEMPLARY CUSTOMER SERVICE



Our dedicated team work tirelessly to ensure we offer the highest calibre of customer service. The Evonic Fires sales department are always on hand to answer any queries you may have regarding our products before or after you make a purchase, and our knowledgeable service department will always have time to discuss any problems over the phone to ensure you are getting the best performance from your Evonic fire.



Alongside developing and manufacturing market leading fireplaces, the Evonic Fires team have been working hard to gain ISO certification throughout 2021. ISO stands for '**International Organisation for Standardisation**', and gaining this certification means we have proven our services and processes to be world-class in their quality, safety, and efficiency. When purchasing an Evonic fire, customers can be confident in receiving a product built to the highest standard.

FINISH OPTIONS

White



Whitestone



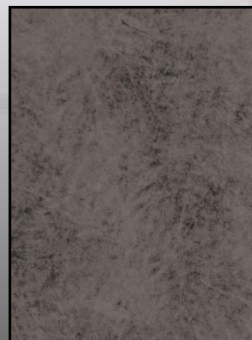
Essence



Soapstone



Sienna



Inglewood / Crenshaw / Imperium /
Bergen / Compton 1000 / Empire 2 / Compton 2

White



Essence



Soapstone



Sienna



Canto 200 / Locanda 180 /
Espire 150 / Murano / Mirada / Ellipse



REMOTE CONTROL



The new Evonic Fires remote handset will now come as standard with all suite models. This simple hand-held control will allow customers to easily access their fireplaces main features, without having to manually pair the fire with their home Wi-Fi to a mobile device. Users can turn their fire **ON** or **OFF**, change animation (e-smart products only), dim their lighting effect, or turn their overbed illumination **ON** or **OFF**. Customers can also turn the heat feature **ON** to give their living space a steady boost of warmth.

-  ON/OFF
-  DOWNLIGHTS
-  HEAT ON
-  HEAT OFF
-  ANIMATIONS
-  DIMMER



E-SMART



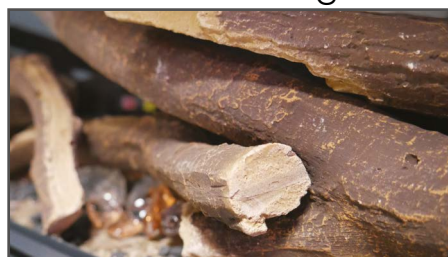
App control also available



- Fully remote controlled
- Brightness adjustment
- Overbed **ON/OFF** switch
- Turn your heat **ON/OFF**
- Dual animation selection
- Optional mood-lighting kit



Woodland logs



Silver birch logs



e-Illuminate lighting kit



FEATURES

BESPOKE FUEL BED AND LOG SET



Each Evonic Fires model comes complete with a bespoke fuel bed and log set, chosen specifically by our design team to enhance the aesthetic of your fire.

SCHOTT® GLASS

SCHOTT® is a market leader in glass production, and their products encompass optical interference properties resulting in a high-grade finish. **SCHOTT Clear Float®** glass is produced using the float process, leading to glass that has perfectly flat and parallel surfaces. This is available on all models where **SCHOTT Clear Float®** is shown.



Please note: Evonic Fires prides itself on constant development and innovation. We therefore reserve the right to alter the specification of any Evonic product without formal notice. The images in this brochure are produced using photography and CGI. Although the utmost care has been taken to accurately portray our products, we always advise a viewing in person at an approved Evonic Fires retailer's showroom.

DUAL FLAME ANIMATIONS



IGNITE



FIESTA

CANTO 200



- **1500mm** flame effect
- 1500W heat output
- **SCHOTT CLEAR FLOAT®** front glass
- Remote included
- Woodland or silver birch log set
- **e-smart cloud** app controlled
- Dual animation selection
- Over-bed illumination
- Independent fuel bed settings
- Complimenting Soapstone or Sienna stepped side wings
- Three-sided glass model
- Available in **4** colourways
- **W 1980mm x D 275mm x H 608mm**

Essence

White

Sienna

Soapstone



Shown in **sienna** finish

LOCANDA 175



- **1255mm** flame effect
- 1500W heat output
- **SCHOTT CLEAR FLOAT®** front glass
- Remote included
- Woodland or silver birch log set
- **e-smart cloud** app controlled
- Dual animation selection
- Over-bed illumination
- Independent fuel bed settings
- Complimenting Soapstone or Sienna stepped side wings
- Three-sided glass model
- Available in **4** colourways
- **W 1726mm x D 275mm x H 529mm**

Essence

White

Sienna

Soapstone



Shown in **soapstone** finish



ESPIRE 150



- **1000mm** flame effect
- 1500W heat output
- **SCHOTT CLEAR FLOAT®** front glass
- Remote included
- Woodland or silver birch log set
- **e-smart cloud** app controlled
- Dual animation selection
- Over-bed illumination
- Independent fuel bed settings
- Complimenting Soapstone or Sienna stepped side wings
- Three-sided glass model
- Available in **4** colourways
- **W 1473mm x D 275mm x H 529mm**

Essence

White

Sienna

Soapstone



RIVERA 200



- **1500mm** flame effect
- 1500W heat output
- **SCHOTT CLEAR FLOAT®** front glass
- Remote included
- Woodland or silver birch log set
- Rear and side feature lighting
- **e-smart cloud** app controlled
- Dual animation selection
- Over-bed illumination
- Independent fuel bed settings
- White & Oak finish
- **W 2006mm x D 235mm x H 641mm**



Our **Rivera** models feature hand-crafted oak wooden decorative side slats to compliment the clean, white finish. Rivera models also incorporate our **e-illuminate** feature lighting for an additional wow-factor, giving the fire a floating appearance.



e-illuminate
Smart lighting from evonic fires

RIVERA 175



- 1250mm flame effect
- 1500W heat output
- **SCHOTT CLEAR FLOAT®** front glass
- Remote included
- Woodland or silver birch log set
- Rear and side feature lighting
- **e-smart cloud** app controlled
- Dual animation selection
- Over-bed illumination
- Independent fuel bed settings
- White & Oak finish
- **W 1752mm x D 235mm x H 641mm**



Our **Rivera** models feature hand-crafted oak wooden decorative side slats to compliment the clean, white finish. Rivera models also incorporate our **e-illuminate** feature lighting for an additional wow-factor, giving the fire a floating appearance.



e-illuminate
Smart lighting from evonic fires

RIVERA 150



- **1000mm** flame effect
- 1500W heat output
- **SCHOTT CLEAR FLOAT®** front glass
- Remote included
- Woodland or silver birch log set
- Rear and side feature lighting
- **e-smart cloud** app controlled
- Dual animation selection
- Over-bed illumination
- Independent fuel bed settings
- White & Oak finish
- **W 1500mm x D 235mm x H 641mm**



Our **Rivera** models feature hand-crafted oak wooden decorative side slats to compliment the clean, white finish. Rivera models also incorporate our **e-illuminate** feature lighting for an additional wow-factor, giving the fire a floating appearance.



e-illuminate
Smart lighting from evonic fires

RIVERA 125



- **641mm** flame effect
- 1500W heat output
- **SCHOTT CLEAR FLOAT®** front glass
- Remote included
- Woodland or silver birch log set
- Rear feature lighting
- **e-smart cloud** app controlled
- Dual animation selection
- Over-bed illumination
- Independent fuel bed settings
- White & Oak finish
- **W 1245mm x D 260mm x H 1010mm**



Our **Rivera** models feature hand-crafted oak wooden decorative side slats to compliment the clean, white finish. Rivera models also incorporate our **e-illuminate** feature lighting for an additional wow-factor, giving the fire a floating appearance.



e-illuminate
Smart lighting from evonic fires

MURANO



- **754mm** flame effect
- 1500W heat output
- **SCHOTT CLEAR FLOAT®** front glass
- Remote included
- Woodland or silver birch log set
- **e-smart cloud** app controlled
- Dual animation selection
- Over-bed illumination
- Independent fuel bed settings
- Decorative base
- Available in **4** colourways
- **W 1346mm x D 381mm x H 1150mm**

Essence

White

Sienna

Soapstone



Shown in **sienna** finish

MIRADA



- **1250mm** flame effect
- 1500W heat output
- **SCHOTT CLEAR FLOAT®** front glass
- Remote included
- Woodland or silver birch log set
- **e-smart cloud** app controlled
- Dual animation selection
- Over-bed illumination
- Independent fuel bed settings
- Available in **4** colourways
- **W 1460mm x D 280mm x H 815mm**

Essence

White

Sienna

Soapstone



Shown in **soapstone** finish

IMPERIUM



- **641mm** flame effect
- 1500W heat output
- **SCHOTT CLEAR FLOAT®** front glass
- Remote included
- Woodland or silver birch log set
- **e-smart cloud** app controlled
- Dual animation selection
- Over-bed illumination
- Independent fuel bed settings
- Soapstone or Sienna stepped side wings
- Three-sided glass model
- Available in **5** finishes
- Curved woodwork
- **W 1120mm x D 270mm x H 512mm**

White



Whitestone



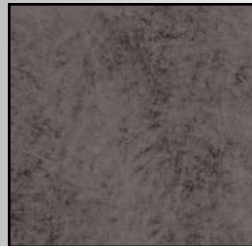
Essence



Soapstone



Sienna



Shown in **sienna** finish

e-illuminate
Smart lighting from evonic fires

CRENSHAW



- **1000mm** flame effect
- 1500W heat output
- **SCHOTT CLEAR FLOAT®** front glass
- Remote included
- Woodland or silver birch log set
- **e-smart cloud** app controlled
- Dual animation selection
- Over-bed illumination
- Independent fuel bed settings
- Soapstone or Sienna stepped side wings
- Three-sided glass model
- Available in **5** finishes
- **W 1500mm x D 355mm x H 511mm**

White



Whitestone



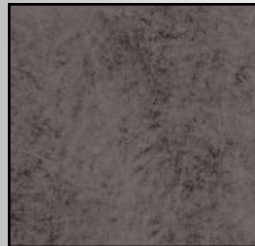
Essence



Soapstone



Sienna



Shown in **white** finish



INGLEWOOD



- **641mm** flame effect
- 1500W heat output
- **SCHOTT CLEAR FLOAT®** front glass
- Remote included
- Woodland or silver birch log set
- **e-smart cloud** app controlled
- Dual animation selection
- Over-bed illumination
- Independent fuel bed settings
- Soapstone or Sienna stepped side wings
- Three-sided glass model
- Available in **5** finishes
- **W 1120mm x D 310mm x H 514mm**

White



Whitestone



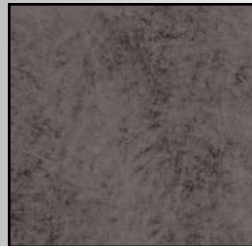
Essence



Soapstone



Sienna



Shown in **white** finish

ELLIPSE



- **1000mm** flame effect
- 1500W heat output
- **SCHOTT CLEAR FLOAT®** front glass
- Remote included
- Woodland or silver birch log set
- **e-smart cloud** app controlled
- Dual animation selection
- Over-bed illumination
- Independent fuel bed settings
- Soapstone or Sienna stepped side wings
- Three-sided glass model
- Available in **4** colourways
- Curved woodwork
- **W 1473mm x D 300mm x H 529mm**

Essence

White

Sienna

Soapstone



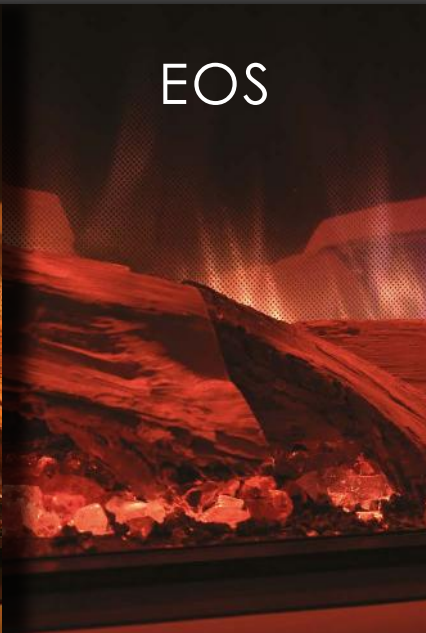
Shown in **white** finish

VARIETY OF
FLAME DESIGN COLOURS

IGNITE



EOS



BREATHE



SPECTRUM



ODYSSEY



EMBERS



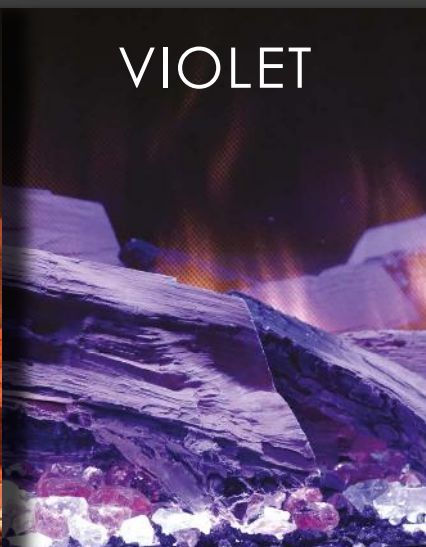
AURORA



VERO



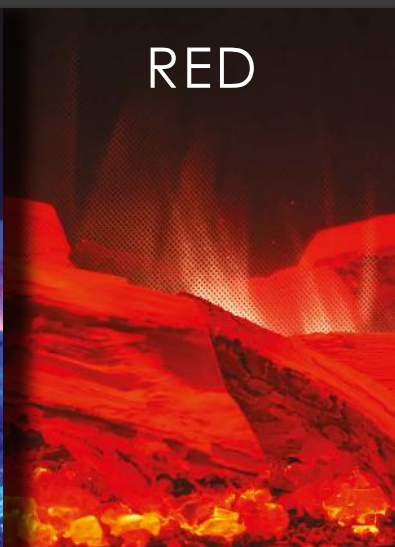
VIOLET



BLUE



RED



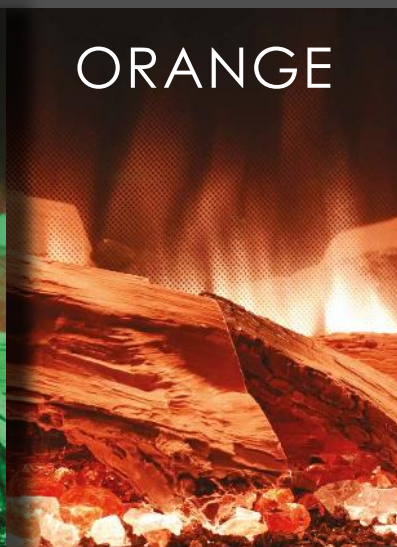
WHITE



GREEN



ORANGE



GILMOUR 10



- 1500W heat output
- Woodland or silver birch log set
- **e-smart cloud** app controlled
- Choice of multiple flame effects
- Over-bed illumination
- Floating hearth
- Optional riser
- Remote Included
- White & soapstone surround
- Stepped side wings
- Vermiculite fuel bed
- **W 1475mm x D 276mm x H 531mm**

GILMOUR 7



- 1500W heat output
- Woodland or silver birch log set
- **e-smart cloud** app controlled
- Choice of multiple flame effects
- Over-bed illumination
- Floating hearth
- Optional riser
- Remote Included
- White & soapstone surround
- Stepped side wings
- Vermiculite fuel bed
- **W 1120mm x D 276mm x H 538mm**

GILMOUR 6



- 1500W heat output
- Woodland or silver birch log set
- **e-smart cloud** app controlled
- Choice of multiple flame effects
- Over-bed illumination
- Floating hearth
- Optional riser
- Remote Included
- White & soapstone surround
- Stepped side wings
- Vermiculite fuel bed
- **W 1120mm x D 276mm x H 712mm**

BERGEN



- 1500W heat output
- **SCHOTT CLEAR FLOAT®** front glass
- Woodland or silver birch logs
- **e-smart cloud** app controlled
- Choice of multiple flame effects
- Over-bed illumination
- Grey or beige ceramic tiles
- Remote included
- Available in **5** finishes
- **W 1475mm x D 355mm x H 615mm**

EVOFLAME



App control also available



- Fully remote controlled
- Brightness adjustment
- Overbed **ON/OFF** switch
- Turn your heat **ON/OFF**
- Optional mood-lighting kit

evoflame[®]
technology

works with
Google Assistant

WORKS WITH
amazon alexa



e-Illuminate
Smart lighting from evonic fires

Woodland logs



Silver birch logs



e-Illuminate lighting kit



FEATURES

BESPOKE FUEL BED AND LOG SET



Each Evonic Fires model comes complete with a bespoke fuel bed and log set, chosen specifically by our design team to enhance the aesthetic of your fire.

SCHOTT[®] GLASS


SCHOTT[®] is a market leader in glass production, and their products encompass optical interference properties resulting in a high-grade finish. **SCHOTT Conturan Magic[®]** allows up to a 90% reduction in surface reflections, leaving customers with a flawless, uninterrupted view of their flame effect and fuel bed. This is available on all models where **SCHOTT Conturan Magic[®]** is shown.

Conturan Magic **SCHOTT[®]** glass



Please note: Evonic Fires prides itself on constant development and innovation. We therefore reserve the right to alter the specification of any Evonic product without formal notice. The images in this brochure are produced using photography and CGI. Although the utmost care has been taken to accurately portray our products, we always advise a viewing in person at an approved Evonic Fires retailer's showroom.

AWARD-WINNING SINGLE FLAME EFFECT



Our award-winning Evoflame models boast one of the most authentic flame effects of any electric fire available. Finished with silver birch or woodland logs, and with a fuel bed decorated with realistic slate chippings, our Evoflame models come in a variety of size options to suit any living space. With an abundance of control options, ranging from a remote handset to Amazon Alexa, our fires couldn't be simpler to operate.

evoflame[®]
technology

COMPTON 1000



- 750/1500W heat outputs
- Glass side panels
- Woodland or silver birch log set
- **e-smart cloud** app controlled
- Remote included
- Feature side lighting
- Grey or beige ceramic tiles
- Available in **5** finishes
- **W 1500mm x D 355mm x H 511mm**

COMPTON 2



- 750/1500W heat outputs
- Glass side panels
- Woodland or silver birch log set
- **e-smart cloud** app controlled
- Remote included
- Feature side lighting
- Grey or beige ceramic tiles
- Available in **5** finishes
- **W 1120mm x D 310mm x H 514mm**

EMPIRE 2



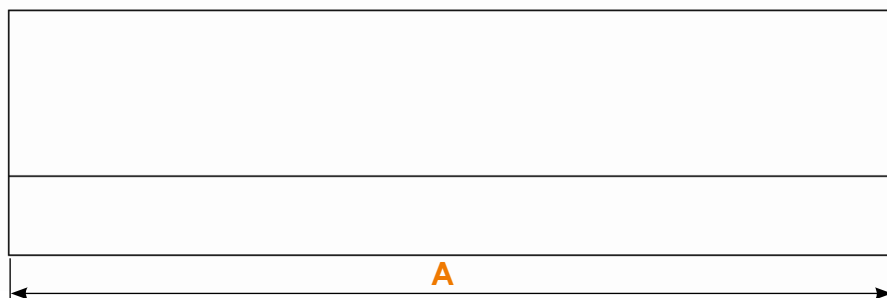
- 750/1500W heat outputs
- Glass side panels
- Woodland or silver birch log set
- **e-smart cloud** app controlled
- Feature side lighting
- Remote included
- Grey or beige ceramic tiles
- Available in **5** finishes
- Curved woodwork
- **W 1120mm x D 270mm x H 512mm**

MIDORI

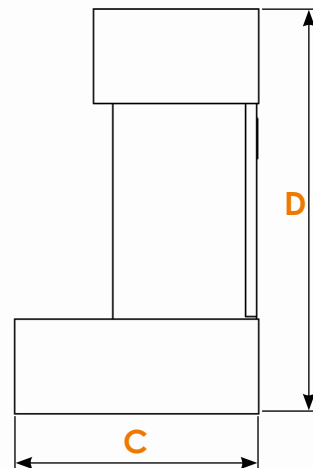
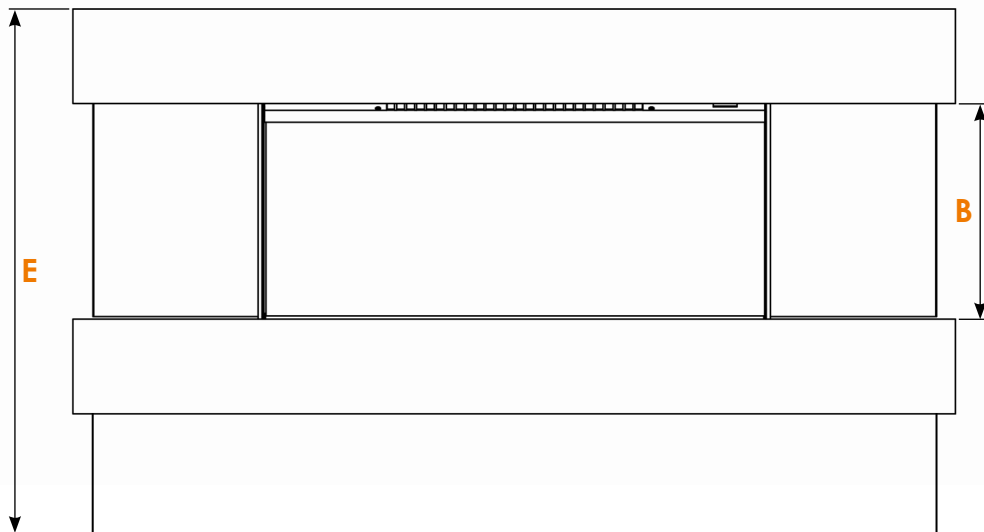


- 750/1500W heat outputs
- **SCHOTT CONTURAN MAGIC®** front glass
- Woodland or silver birch log set
- **e-smart cloud** app controlled
- Remote included
- Available in black
- **W 527mm x D 319mm x H 619mm**

SPECIFICATION



- A** - Total width
- B** - Opening height
- C** - Total depth
- D** - Height
- E** - Height with riser



MODEL	A	B	C	D	E
Canto 200	1982mm	356mm	275mm	529mm	N/A
Locanda 175	1726mm	355mm	275mm	529mm	N/A
Espire 150	1473mm	278mm	275mm	529mm	N/A
Rivera 125	1245mm	752mm	260mm	1010mm	N/A
Rivera 150	1500mm	278mm	235mm	641mm	N/A
Rivera 175	1752mm	355mm	235mm	641mm	N/A
Rivera 200	2006mm	356mm	235mm	641mm	N/A
Murano	1346mm	682mm	381mm	1150mm	N/A
Mirada	1460mm	355mm	280mm	815mm	N/A
Imperium	1120mm	272mm	270mm	512mm	N/A
Crenshaw	1500mm	261mm	355mm	511mm	N/A
Inglewood	1120mm	274mm	310mm	514mm	N/A
Ellipse	1473mm	278mm	300mm	529mm	N/A
Gilmour 10	1475mm	277mm	276mm	531mm	811mm
Gilmour 7	1120mm	285mm	276mm	538mm	818mm
Gilmour 6	1120mm	455mm	276mm	712mm	992mm
Bergen	1475mm	357mm	355mm	615mm	N/A
Compton 1000	1500mm	261mm	355mm	511mm	N/A
Compton 2	1120mm	274mm	310mm	514mm	N/A
Empire 2	1120mm	274mm	270mm	512mm	N/A
Midori	527mm	397mm	319mm	619mm	N/A



2022 brochures

2022 will see Evonic Fires introduce a host of fantastic new products, which can be viewed in our new **e-illusion**, **built-ins**, and **insets & stoves** brochures.

evonicfires

1 Evonic House, Clifford Park, Clifford Lane,
Stratford-upon-Avon, Warwickshire, CV37 8HW

TEL: **01789 263868** | FAX: **01789 293080**

www.evonicfires.co.uk | sales@evonicfires.co.uk

